



WARMFLOW Oil Condensing

Boilers



Muirfield Drive, Naas Road, Dublin 12
Tel: 01-4191919 Fax: 01-4584806
Email: info@hevac.ie
Web: www.hevac.ie

OUTDOOR



Kabin Pak HE Series
Pre wired High efficiency boiler



K90HE
70,000-90,000BTU (21-26kW)

K120HE
90,000-120,000BTU (26-33kW)

K150HE
1200,000-150,000BTU (33-44kW)

BOILER-HOUSE / UTILITY



Utility HE Series
Pre wired High efficiency boiler
Complete with balanced flue



U90HE
70,000-90,000BTU (21-26kW)

U120HE
90,000-120,000BTU (26-33kW)

U150HE
1200,000-150,000BTU (33-44kW)

A young man and woman are shown from the chest up, wearing white bathrobes. They are smiling broadly and embracing each other. The woman is on the left, leaning her head against the man's head on the right. They are in a bright, modern kitchen with white cabinetry and a window in the background.

WARMFLOW
The Boiler People

the complete range of
warmflow oil and gas
fired condensing boilers

**SEDBUK
& HARP** **A**
HIGH EFFICIENCY

warmflow - the perfect choice

Warmflow has been established as a privately owned company since 1970. During this time we have developed into one of the UK and Ireland's leading manufacturers of oil-fired heating appliances gaining a reputation for high quality, value for money products.

At the core of our success has been our commitment to quality:

'Quality manufacturing, sales support and back-up service.'

All our products have been independently tested and accredited. Our HE range of appliances exceed the minimum SEDBUK efficiency requirements and comply with Document L1A, L1B (England & Wales), The Building Standards (Scotland) Regulations Section 6, Approved Document Part F (Northern Ireland) and with the HARP efficiency requirements for Part L (Republic of Ireland).

In addition, to ensure that we maintain our own in house quality standards, we have in place a BSI approved monitoring system, certified to BS EN ISO 9001:2000.



quality design with built-in reliability

product index

condensing high efficiency oil-fired range

- 4-5 **Utility HE:** Pre-wired, Pre-pumped, System & Combi
- 6-7 **Kabin Pak HE:** Pre-wired, Pre-pumped, System & Combi
- 8-9 **Balanced Flue Options**

condensing high efficiency gas-fired range

- 10-11 **G-Series**
- 12-13 **Flue Options**

product comparison

- 14-15 **Product Comparison Chart**



relax it's a warmflow boiler

HE oil-fired range



utility HE series

introducing the perfect choice in high efficiency utility and kitchen oil boilers

The HE utility range has been specifically designed to fit into most kitchen and utility room applications. It's stylish white casing houses a highly efficient heat exchanger that can be easily accessed for servicing without the need for removable work surfaces. The latest in Riello burner technology makes the utility range quiet in operation and the perfect choice in oil-fired boilers.

unique features and benefits

HE boilers are suitable for use on most types of fully pumped heating and hot water systems and are ideal for systems that have been designed to operate with a low return water temperature i.e. under floor heating.

All HE boilers are suitable for use on conventional flues or low-level, high-level or vertical balanced flues using the HE 'Easy-fit' balanced flue system. See pages 8-9 for flue options.

Available in outputs from 50,000 Btu/h (15kW) to 150,000 Btu/h (44kW)

Finished in stylish high gloss white casing

Designed to fit neatly under standard work surfaces

Front servicing

Supplied for balanced flue application

Suitable for use with HE 'Easy-fit' flue systems

Riello RDB 2.2 and 3.2 burners



programmer

An optional 7 day digital plug-in programmer (PU1) is available on all Utility HE boilers.



U70HE
U90HE
U120HE
U150HE
Pre-wired

the HE range
pre-wired



The pumped model includes all the features of the Utility boiler with the added advantage of a factory fitted & wired pump.

UP70HE
UP90HE
UP120HE
UP150HE
Pre-pumped

the HE range
pre-pumped



warmflow condensing boilers...

ease of installation

Warmflow takes pride in being a company with a reputation for producing quality products that are easy to install and maintain and as you would expect the HE range fits nicely with this philosophy.

Incorporating the latest Riello RDB 2.2 and 3.2 burners and an easy-clean front servicing secondary heat exchanger with a unique patented design, the HE range is proving to be extremely popular with both heating and commissioning engineers.

specifications

MODEL	PRE-WIRED				PRE-PUMPED				SYSTEM			COMBI	
	U70HE	U90HE	U120HE	U150HE	UP70HE	UP90HE	UP120HE	UP150HE	US70HE	US90HE	US120HE	UC70HE	UC90HE
Output (kW)	15-21	21-26	26-33	33-44	15-21	21-26	26-33	33-44	15-21	21-26	26-33	15-21	21-26
Flue options	Conventional flue, low-level, high-level and vertical balanced flue												
Conventional flue size (mm)	100		125		100		125		100			100	
Efficiency % (nett)	97		96		97		96		97			94	
Sedbuk rating	A		A		A		A		A			A	
Height (mm)	865		1155		865		1155		865			865	
Depth (mm)	600		872		600		872		600			600	
Width (mm)	413		595		413		595		413			595	
Service access	Front only				Front only				Front only			Front/Top	
Condensate trap	Factory fitted				Factory fitted				Factory fitted			Factory fitted	



US70HE
US90HE
US120HE
System



UC70HE
UC90HE
Combi

the HE range sealed system

(Supplied as a pre-pumped boiler with a system kit. The 12 litre expansion vessel supplied is suitable for a maximum total system volume of up to 145 litres.)

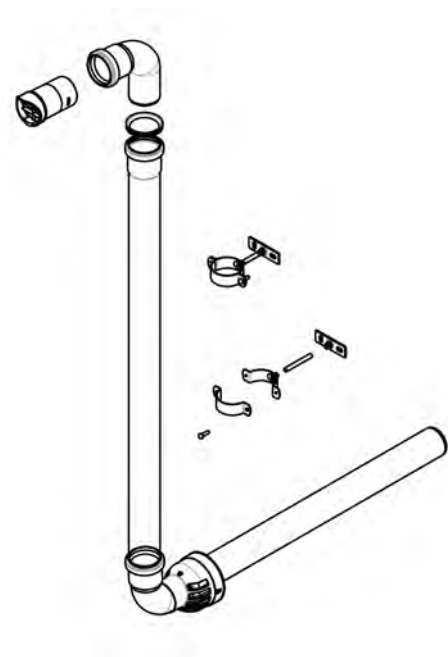
the HE range heat store combi

an environmental investment

Designed to be environmentally friendly, Warmflow HE boilers are highly efficient in operation and are SEDBUK 'A' rated. Combining economical running cost operation with comprehensive 5 year heat exchanger warranty makes Warmflow the perfect choice for oil-fired heating.

plume management kit

See page 8 for details



HE oil-fired range



kabin pak HE series

introducing the perfect choice in high efficiency outdoor oil boilers

For those occasions when internal space is limited, the external boilers offer total flexibility and are designed to be simple and quick to install. These totally self-contained units are supplied in a protective, pre-coated, fully insulated, olive green casing approved to IP45 rating.



the perfect choice

in high efficiency outdoor oil boilers

Available in outputs from 50,000 Btu/h (15kW) to 150,000 Btu/h (44kW)

High quality pre-coated finish (olive green)

Left, right or rear flue options as standard

Optional top outlet flue

Riello RDB 2.2 and 3.2 burners



K70HE
K90HE
K120HE
K150HE
Pre-wired



The pumped model includes all the features of the Kabin Pak with the added advantage of a factory fitted & wired pump.

KP70HE
KP90HE
KP120HE
KP150HE
Pre-pumped



the HE range pre-wired

the HE range pre-pumped

warmflow condensing boilers...

frost thermostat

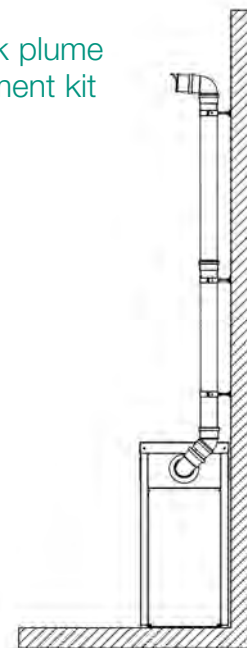
A frost thermostat is fitted as standard to all Kabin Pak combi models. For all other Kabin Pak models a frost thermostat kit, incorporating an isolating switch, servicing function and clipped pipe stat is supplied as an option.

specifications

MODEL	PRE-WIRED				PRE-PUMPED				SYSTEM			COMBI	
	K70HE	K90HE	K120HE	K150HE	KP70HE	KP90HE	KP120HE	KP150HE	KS70HE	KS90HE	KS120HE	KC70HE	KC90HE
Output (kW)	15-21	21-26	26-33	33-44	15-21	21-26	26-33	33-44	15-21	21-26	26-33	15-21	21-26
Flue options	Conventional flue, low-level, high-level and vertical balanced flue												
Conventional flue size (mm)	n/a		n/a		n/a		n/a		n/a			n/a	
Efficiency % (nett)	97		96		97		96		97			94	
Sedbuk rating	A		A		A		A		A			A	
Height (mm)	900		1155		900		1155		900			900	
Depth (mm)	700		876		700		876		700			700	
Width (mm)	413		595		413		595		413			600	
Service access	Front				Front				Front			Front/Top	
Condensate trap	Factory fitted				Factory fitted				Factory fitted			Factory fitted	



kabin pak plume management kit



the HE range sealed system

(Supplied as a pre-pumped boiler with a system kit. The 12 litre expansion vessel supplied is suitable for a maximum total system volume of up to 145 litres.)

the HE range heat store combi



more **heat** less fuel

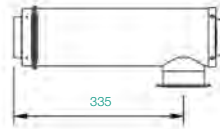
HE oil-fired range



utility HE flue systems

HE low-level balanced flue kits (FBF)

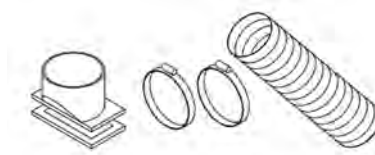
F1 - horizontal flue adaptor



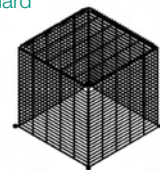
F2 - horizontal end terminal



F13 - flue fittings kit

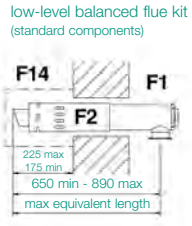
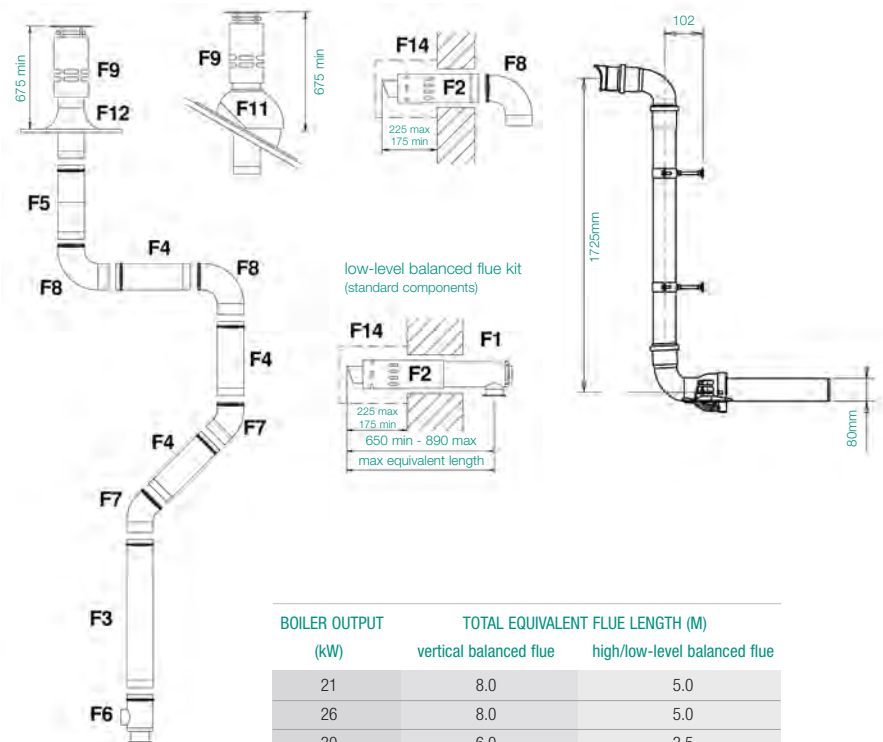


F14 - terminal guard



vertical & high-level terminal options

1. vertical balanced flue flat roof finishing
2. vertical balanced flue pitched roof flashing
3. high-level balanced flue
4. plume management kit



FBF (low-level balanced flue kit) includes items:

- F1 - horizontal flue adaptor
- F2 - horizontal end terminal
- F13 - flue fittings kit
- F14 - terminal guard



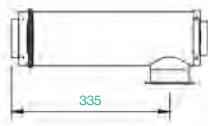
BOILER OUTPUT (kW)	TOTAL EQUIVALENT FLUE LENGTH (M)	
	vertical balanced flue	high/low-level balanced flue
21	8.0	5.0
26	8.0	5.0
30	6.0	3.5
33	4.0	2.5
44	4.0	2.5

Note:

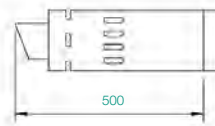
1. All flues can utilise any combination of bends, straights, adaptors and terminals.
2. Ensure flue is arranged such that it falls continuously towards the boiler.
3. The low-level Balanced Flue Kit can use any combination of flue extension pieces up to the maximum equivalent length depending upon boiler output as illustrated in the above table.

warmflow HE boiler flue components:

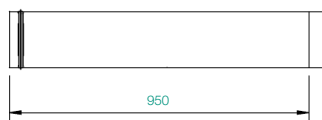
F1 - horizontal flue adapter¹



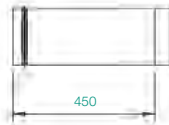
F2 - horizontal end terminal²



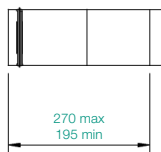
F3 - 1000mm extension pipe



F4 - 500mm extension pipe



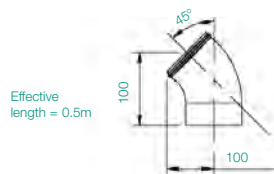
F5 - telescopic extension pipe



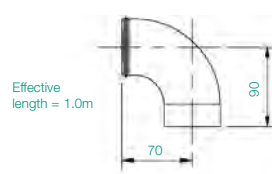
F6 - vertical flue adapter¹



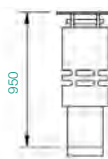
F7 - 45° bend



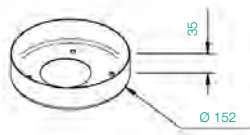
F8 - 90° bend



F9 - vertical end terminal



F10 - conventional flue adapter



F11 - pitched roof flashing



F12 - flat roof flashing



Calculating the total equivalent flue length

1. Decide on the boiler output.
2. Decide on the type of flue system required.
3. Decide if you need any flue bends.
4. Add 1m for every 90° bend and 0.5m for every 45° bend to the actual length of the flue system.
5. Establish from the table opposite the total equivalent flue length.
6. When using flue bends IT IS IMPORTANT to ensure that you do not exceed the total equivalent flue length.

Example

Boiler output (20kW), Length of flue (distance from boiler to terminal) (8mtrs)

Example 1: No Bends Fitted

Length of flue	8 mtrs
No bends	0 mtrs
Equivalent height	8 mtrs
Equivalent height within the maximum allowed. INSTALLATION ACCEPTABLE	

Example 2: 2 x 45° Bends Fitted

Length of flue	8 mtrs
2 x 45° bends	1 mtr
Equivalent height	9 mtrs
Equivalent height now exceeds the maximum allowed. INSTALLATION NOT ACCEPTABLE	

Note:

1. Flue fitting kit required.
2. If terminal is less than 2 metres above ground level, terminal guard must be fitted.
3. Extension pipes and flue adaptor lengths quoted are effective lengths and not the actual length of the piece.
4. All dimensions in mm unless otherwise stated.

G-Series gas boilers



Available in system and combi models
with outputs of 25 and 29kW

SEDBUK Band A & Band B models

Automatic pump overrun, anti-seize and
frost protection built-in

Output modulation

Advanced digital self-diagnostics

Electronic performance optimisation

LPG compatible



G-Series gas boilers

maximum efficiency

The Warmflow G-Series range of high efficiency condensing gas boilers use the latest in heat transfer and control technology to maximise efficiency and minimise gas consumption.

All the boilers in our high efficiency gas range have condensing efficiencies in excess of 100% nett, saving you money compared to a traditional boiler.

maximum comfort

Both combi boilers in our range have extremely impressive hot water flow rates; the Band A combi produces 12.5 litres per minute at a 35°C rise.

maximum use of space

All the boilers in our range are compact and versatile in their installation, saving you valuable space.

maximum ease of use

Our intuitive controls and digital display are easy to use and understand.

In addition, the combi boilers in our range are fitted with an easy to operate, panel mounted, mechanical time clock as standard.

maximum peace of mind

As an established, leading manufacturer of heating appliances our commitment is to 'quality design with built-in reliability.'

All our gas-fired boilers come with a 2 year parts and labour warranty, supported by a nationwide network of experienced, trained engineers.

automatic boiler protection

Intelligent protective features include post-ventilation, CH & DHW pump overrun, pump anti-seize, diverter valve anti-seize and frost protection.

electronic performance optimisation

Advanced digital controls allow the commissioning engineer to adjust control parameters such as minimum, maximum and ignition sequence gas rates at the push of a button.

warmflow condensing boilers...

LPG compatible

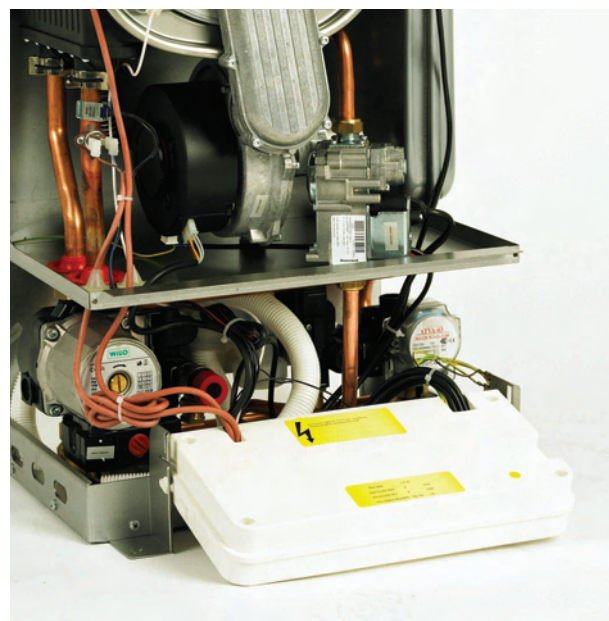
All models can be configured to run on LPG with a simple re-commission. Replacement injectors are required only for the Band B models.

commissioning mode

Incredibly simple to activate; at the push of a single button the boiler operates at maximum output. Gas rates, working pressures and flue measurements are made easy for the commissioning engineer.

self-diagnostics

Powerful digital self-diagnostics allow the service engineer to identify faults with ease and speed. Precise error codes, displayed on the LCD, pin-point possible faults.



MODEL	GS25A* SYSTEM	GC29A COMBI	GS25B* SYSTEM	GC29B COMBI
Heat Input max/min (kW)	25/9	30/10	26.8/20	30/18
Heat Output max (kW)	24.6	29.4	25.5	29.0
SEDBUK Band	A	A	B	B
NOx Class	5	5	2	2
Central Heating Circuit				
CH Temperature max/min (°C)	80/30	80/30	80/30	80/30
CH Pressure max/min (bar)	3.0/0.3	3.0/0.3	3.0/0.3	3.0/0.3
Expansion Vessel Capacity (L)	7.0	7.0	8.0	8.0
Hot Water Circuit				
DHW Temperature max/min (°C)	-	60/35	-	60/35
DHW Pressure max/min (bar)	-	6.0/0.5	-	6.0/0.5
DHW Flow Rate @35°C rise (L/min)	-	12.5	-	12.0
Dimensions (casing)				
Width (mm)	410	410	450	450
Depth (mm)	285	310	320	320
Height (mm)	730	730	830	830
Weight (kg)	44	49	48	53
Connections				
CH (Flow & Return) (mm)	22	22	22	22
DHW (Inlet & Outlet) (mm)	-	15	-	15
Gas (mm)	22	22	22	22
Electrical Specification				
Supply (V/Hz)	230/50	230/50	230/50	230/50
Power Consumption (W)	170	180	170	180
IP Protection Rating (IP)	X4D	X4D	X4D	X4D

* These boilers use zero volt switching contacts and as such can not be used with a "Y-Plan", unless additional wiring and a relay are used, contact Warmflow for details.

At the core of our success has been our commitment to quality:

'Quality manufacturing, sales support and back-up service.'

the essential range of
high efficiency
gas-fired
boilers



with built-in **reliability**

G-Series gas boilers



G-Series flue options

coaxial balanced flue system - Ø 60/100

Description	Code	Equiv Length
Horizontal Kit K	82087LA	1.0m
Vertical Kit V	82091LA	2.0m
1m Extension	82084LA	1.0m
90° Bend	27054LA	0.8m
45° Bend	27053LA	0.5m
Vertical Starter	27060LA	0.2m

coaxial balanced flue system - Ø 80/125

Description	Code	Equiv Length
Horizontal Terminal	3145	1.0m
Vertical Terminal	3152	2.0m
1m Extension	3146	1.0m
0.5m Extension	3147	0.5m
90° Bend	3151	0.8m
45° Bend	3150	0.5m
Adapter 60/100 to 80/125	27087LA	0.0m

twin pipe flue system - Ø 80/80

Description	Code	Equiv Length
Twin Pipe Kit H	82086LA	2.0m
1m Extension	82090LA	1.0m
90° Bend	27055LA	1.5m
45° Bend	27056LA	1.2m
Vertical Starter	27079LA	0.5m

flue accessories

Description	Code	Equiv Length
Pitched Roof Flashing Kit	27059LA	N/A
Flat Roof Flashing Kit	2842	N/A



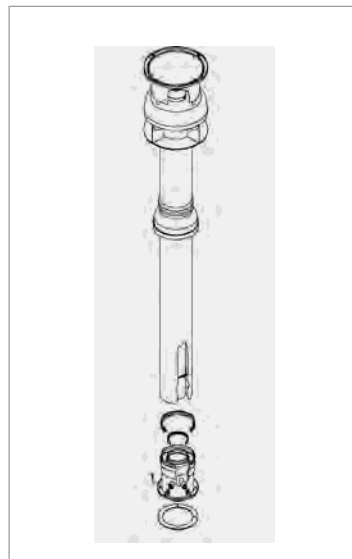
warmflow condensing boilers...

maximum permissible total flue lengths

Boiler	Ø 60/100	Ø 80/125	Ø 80/80
GS25A	5.0m	7.0m	50m
GC29A	3.0m	8.0m	50m
GS25B	4.0m	5.0m	24m
GC29B	4.0m	5.0m	40m

vertical coaxial option

Available in: Ø 60/100
Ø 80/125



horizontal coaxial option

Available in: Ø 60/100
Ø 80/125



twin pipe option

Available in: Ø 80/80



quality design
with built-in
reliability



comparison chart

HE models



MODEL	OUTPUT (KW)	FLUE OPTIONS	C/F SIZE (mm)	SEDBUK RATING	HEIGHT (mm)	DEPTH (mm)	WIDTH (mm)	CONNECTIONS FLOW	RETURN	SERVICE ACCESS	OPTIONAL PROGRAMMER	CONDENSATE TRAP
UTILITY HE SERIES												
PRE-WIRED												
U70HE	15-21	C/F, low / high / vertical B/F	100	A	865	600	413	28mm Comp	1" BSP	front	PU1	factory fitted
U90HE	21-26	C/F, low / high / vertical B/F	100	A	865	600	413	28mm Comp	1" BSP	front	PU1	factory fitted
U120HE	26-33	C/F, low / high / vertical B/F	100	A	865	600	413	28mm Comp	1" BSP	front	PU1	factory fitted
U150HE	33-44	C/F, low / high / vertical B/F	125	A	1155	872	595	1 1/4" BSP	1 1/4" BSP	front	PU1	factory fitted
PRE-PUMPED												
UP70HE	15-21	C/F, low / high / vertical B/F	100	A	865	600	413	22mm	1" BSP	front	PU1	factory fitted
UP90HE	21-26	C/F, low / high / vertical B/F	100	A	865	600	413	22mm	1" BSP	front	PU1	factory fitted
UP120HE	26-33	C/F, low / high / vertical B/F	100	A	865	600	413	28mm	1" BSP	front	PU1	factory fitted
UP150HE	33-44	C/F, low / high / vertical B/F	125	A	1155	872	595	28mm	1 1/4" BSP	front	PU1	factory fitted
SYSTEM												
US70HE	15-21	C/F, low / high / vertical B/F	100	A	865	600	413	22mm	1" BSP	front	PU1	factory fitted
US90HE	21-26	C/F, low / high / vertical B/F	100	A	865	600	413	22mm	1" BSP	front	PU1	factory fitted
US120HE	26-33	C/F, low / high / vertical B/F	100	A	865	600	413	28mm	1" BSP	front	PU1	factory fitted
COMBI												
UC70HE	15-21	C/F, low / high / vertical B/F	100	A	865	600	595	22mm	1" BSP	front/top	PC1	factory fitted
UC90HE	21-26	C/F, low / high / vertical B/F	100	A	865	600	595	22mm	1" BSP	front/top	PC1	factory fitted
KABIN PAK HE SERIES												
PRE-WIRED												
K70HE	15-21	L, R or rear. Optional top	n/a	A	900	700	413	28mm Comp	1" BSP	front/rear	n/a	factory fitted
K90HE	21-26	L, R or rear. Optional top	n/a	A	900	700	413	28mm Comp	1" BSP	front/rear	n/a	factory fitted
K120HE	26-33	L, R or rear. Optional top	n/a	A	900	700	413	28mm Comp	1" BSP	front/rear	n/a	factory fitted
K150HE	33-44	L, R or rear. Optional top	n/a	A	1155	876	595	28mm Comp	1 1/4" BSP	front	n/a	factory fitted
PRE-PUMPED												
KP70HE	15-21	L, R or rear. Optional top	n/a	A	900	700	413	22mm	1" BSP	front/rear	n/a	factory fitted
KP90HE	21-26	L, R or rear. Optional top	n/a	A	900	700	413	22mm	1" BSP	front/rear	n/a	factory fitted
KP120HE	26-33	L, R or rear. Optional top	n/a	A	900	700	413	28mm Comp	1" BSP	front	n/a	factory fitted
KP150HE	33-44	L, R or rear. Optional top	n/a	A	1155	876	595	28mm	1 1/4" BSP	front	n/a	factory fitted
SYSTEM												
KS70HE	15-21	L, R or rear. Optional top	n/a	A	900	700	413	22mm	1" BSP	front/rear	n/a	factory fitted
KS90HE	21-26	L, R or rear. Optional top	n/a	A	900	700	413	22mm	1" BSP	front/rear	n/a	factory fitted
KS120HE	26-33	L, R or rear. Optional top	n/a	A	900	700	413	28mm Comp	1" BSP	front	n/a	factory fitted
COMBI												
KC70HE	15-21	L, R or rear. Optional top	n/a	A	900	700	600	22mm	1" BSP	front/rear	n/a	factory fitted
KC90HE	21-26	L, R or rear. Optional top	n/a	A	900	700	600	22mm	1" BSP	front/rear	n/a	factory fitted
G-SERIES GAS BOILERS												
SYSTEM												
GS25A	24.6	Balanced / twin pipe flue	n/a	A	730	285	410	22mm	22mm	front/sides	n/a	factory fitted
GS25B	25.5	Balanced / twin pipe flue	n/a	B	830	320	450	22mm	22mm	front/sides	n/a	factory fitted
COMBI												
GC29A	29.4	Balanced / twin pipe flue	n/a	A	730	310	410	22mm	22mm	front/sides	factory fitted	factory fitted
GC29B	29.0	Balanced / twin pipe flue	n/a	B	830	320	450	22mm	22mm	front/sides	factory fitted	factory fitted

warmflow condensing boilers...

standard models

All standard models below have 1 flow connection and 1 return connection only with the exception of those models marked with *.

MODEL	OUTPUT (KW)	FLUE OPTIONS	C/F SIZE (mm)	SEDBUK RATING	HEIGHT (mm)	DEPTH (mm)	WIDTH (mm)	CONNECTIONS FLOW	CONNECTIONS RETURN	SERVICE ACCESS	OPTIONAL PROGRAMMER	CONDENSATE TRAP
UTILITY SERIES												
PRE-WIRED												
U70	15-21	C/F, low-level B/F	100	C	865	600	413	1" BSP	1" BSP	front	PU1	n/a
U90	21-26	C/F, low-level B/F	100	C	865	600	413	1" BSP	1" BSP	front	PU1	n/a
U120	26-33	C/F, low-level B/F	100	C	865	600	413	1" BSP	1" BSP	front	PU1	n/a
1215WB*	35-44	C/F, low-level B/F	125	C	1168	785	495	1 1/2" BSP	1 1/2" BSP	front/top	n/a	n/a
200WB*	44-58	C/F, low-level B/F	125	C	1168	785	495	1 1/2" BSP	1 1/2" BSP	front/top	n/a	n/a
PRE-PUMPED												
UP70	15-21	C/F, low-level B/F	100	C	865	600	413	22mm	1" BSP	front/top	PU1	n/a
UP90	21-26	C/F, low-level B/F	100	C	865	600	413	22mm	1" BSP	front/top	PU1	n/a
UP120	26-33	C/F, low-level B/F	100	C	865	600	413	28mm Comp	1" BSP	front	PU1	n/a
SYSTEM												
US70	15-21	C/F, low-level B/F	100	C	865	600	413	22mm	1" BSP	front/top	PU1	n/a
US90	21-26	C/F, low-level B/F	100	C	865	600	413	22mm	1" BSP	front/top	PU1	n/a
US120	26-33	C/F, low-level B/F	100	C	865	600	413	28mm Comp	1" BSP	front	PU1	n/a
COMBI												
UC70	15-21	C/F, low-level B/F	100	C	865	595	595	22mm	22mm	front/top	PC1	n/a
UC90	21-26	C/F, low-level B/F	100	C	865	595	595	22mm	22mm	front/top	PC1	n/a
WALL MOUNTED												
57WM	15-21	Conventional or room sealed	100	C	762	330	450	3/4" BSP	3/4" BSP	front	n/a	n/a
57WMKP	15-21	Conventional flue only	100	C	1023	465	502	3/4" BSP	3/4" BSP	front	n/a	n/a
KABIN PAK SERIES												
PRE-WIRED												
K70	15-21	L, R or rear. Optional top	n/a	C	900	700	413	1" BSP	1" BSP	front/rear	n/a	n/a
K90	21-26	L, R or rear. Optional top	n/a	C	900	700	413	1" BSP	1" BSP	front/rear	n/a	n/a
K120	26-33	L, R or rear. Optional top	n/a	C	900	700	413	1" BSP	1" BSP	front	n/a	n/a
1215KP*	35-44	Top	n/a	C	1089	836	902	1 1/2" BSP	1 1/2" BSP	front/rear	n/a	n/a
200KP*	44-58	Top	n/a	C	1089	836	902	1 1/2" BSP	1 1/2" BSP	front/rear	n/a	n/a
PRE-PUMPED												
KP70	15-21	L, R or rear. Optional top	n/a	C	900	700	413	22mm	22mm Comp	front/rear	n/a	n/a
KP90	21-26	L, R or rear. Optional top	n/a	C	900	700	413	22mm	22mm Comp	front/rear	n/a	n/a
KP120	26-33	L, R or rear. Optional top	n/a	C	900	700	413	28mm Comp	1" BSP	front	n/a	n/a
SYSTEM												
KS70	15-21	L, R or rear. Optional top	n/a	C	900	700	413	22mm	22mm Comp	front/rear	n/a	n/a
KS90	21-26	L, R or rear. Optional top	n/a	C	900	700	413	22mm	22mm Comp	front/rear	n/a	n/a
KS120	26-33	L, R or rear. Optional top	n/a	C	900	700	413	28mm Comp	1" BSP	front	n/a	n/a
COMBI												
KC70	15-21	L, R or rear. Optional top	n/a	C	900	700	600	22mm	22mm	front/rear	n/a	n/a
KC90	21-26	L, R or rear. Optional top	n/a	C	900	700	600	22mm	22mm	front/rear	n/a	n/a
BOILERHOUSE SERIES												
B70	15-21	C/F, low-level B/F	100	C	573	574	396	1" BSP	1" BSP	front	n/a	n/a
B90	21-26	C/F, low-level B/F	100	C	573	574	396	1" BSP	1" BSP	front	n/a	n/a
B120	26-33	C/F, low-level B/F	100	C	662	574	396	1" BSP	28mm Comp	front	n/a	n/a
1215BB*	35-44	C/F, low-level B/F	125	C	965	718	490	1 1/2" BSP	1 1/2" BSP	top	n/a	n/a
200BB*	44-58	C/F, low-level B/F	125	C	965	718	490	1 1/2" BSP	1 1/2" BSP	top	n/a	n/a

Models marked with * have 2 flow and 2 return connections.

more **heat** less fuel

quality design
with built-in
reliability



Head Office (NI)

Warmflow
Lissue Industrial Estate
Moira Road
Lisburn
BT28 2RF

Tel: 028 9262 1515
Fax: 028 9262 0869
Email: sales@warmflow.co.uk

ROI

Tel: 048 9262 1515
Fax: 048 9262 0869
Email: sales@warmflow.co.uk

GB

Tel: 01952 607750
Fax: 01952 603983
Email: sales@warmflowgb.co.uk



CERT No. FM29884



Warmflow Engineering Company Limited maintains a policy of continuous product improvement and reserves the right to change specification without notice. The statutory rights of the consumer are not affected. This brochure should only be used for sales purposes, please consult the installation instructions before installing or specifying a Warmflow boiler, which are available on request.

